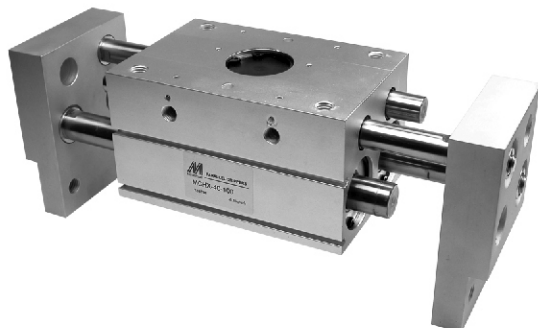


# MCHX series

## WIDE TYPE PARALLEL GRIPPERS



### Order example:

**MCHX – 16(M) – 30 – RK × 1**

MODEL

BORE

φ 16, φ 20,  
φ 25, φ 32,

M: Magnet

STROKE

AUTO SWITCH TYPE  
RK: Reed switch  
RKN: NPN  
RKP: PNP

NUMBER  
of  
AUTO SWITCH

### Features:

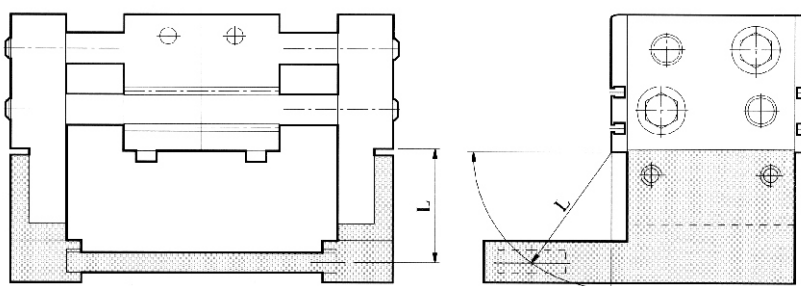
- Finger motion synchronization by a rack-and-pinion mechanism.
- The double piston construction materializes a compact parallel grippers with great holding force and wide range strokes.
- All shafts are equipped with two-point support type Self-Lubricated bearings.
- The Dust seals are contained for protecting the rods thresholds from dust.

### Specification:

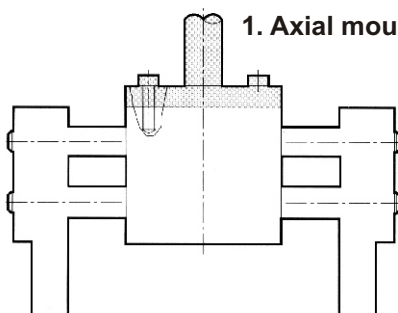
Model	MCHX			
Acting type	Double acting			
Bore	16	20	25	32
Medium	Air			
Stroke	30,60,80	40,80,100	50,100,120	70,120,160
Operating pressure range	1~6.1 kgf/cm <sup>2</sup>			
Ambient temperature	-10~+60°C (No freezing)			
Lubrication	Not required			
Repeatability	±0.1			

- Maintenance: Re-Lubrication after appr. 1.5 million cycles

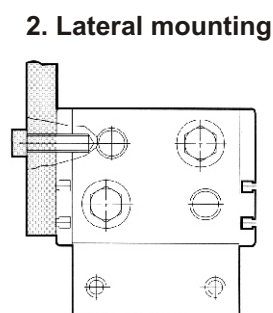
### Holding positing (mm)



### How to mount



1. Axial mounting



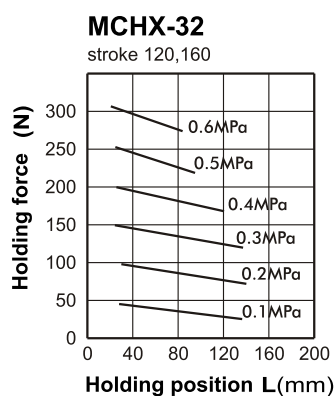
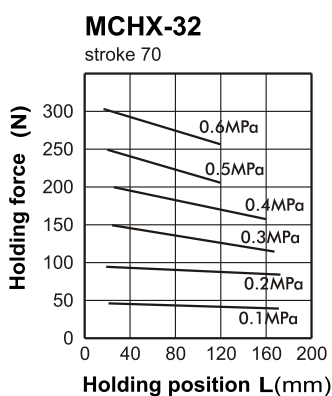
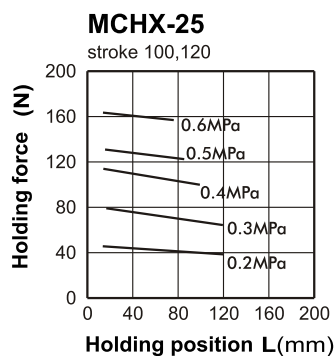
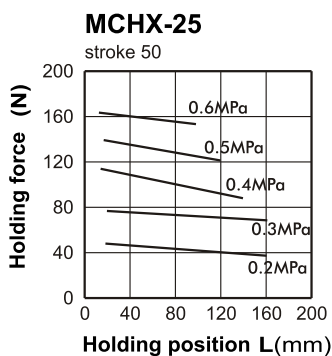
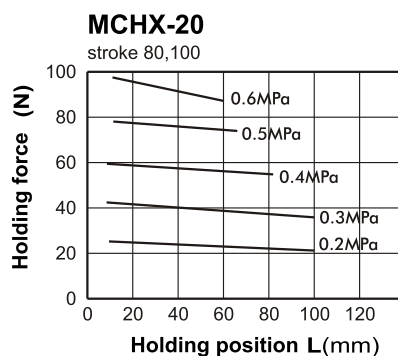
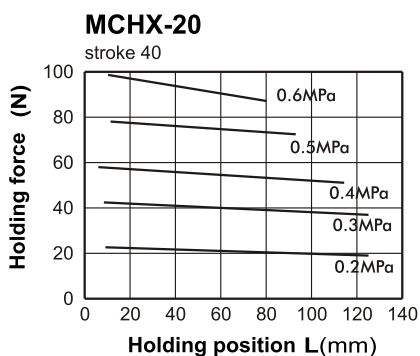
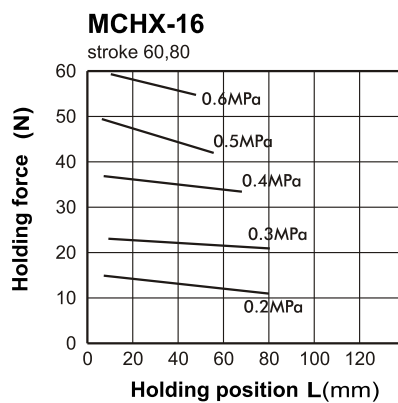
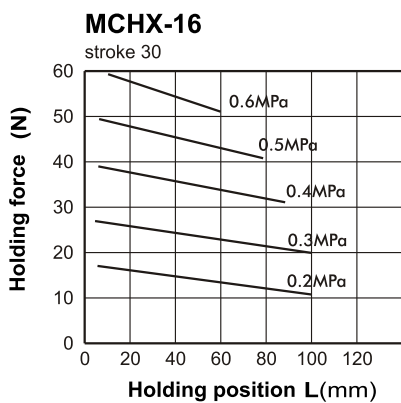
2. Lateral mounting

# MCHX Capacity $\phi 16 \sim \phi 32$

## WIDE TYPE PARALLEL GRIPPERS



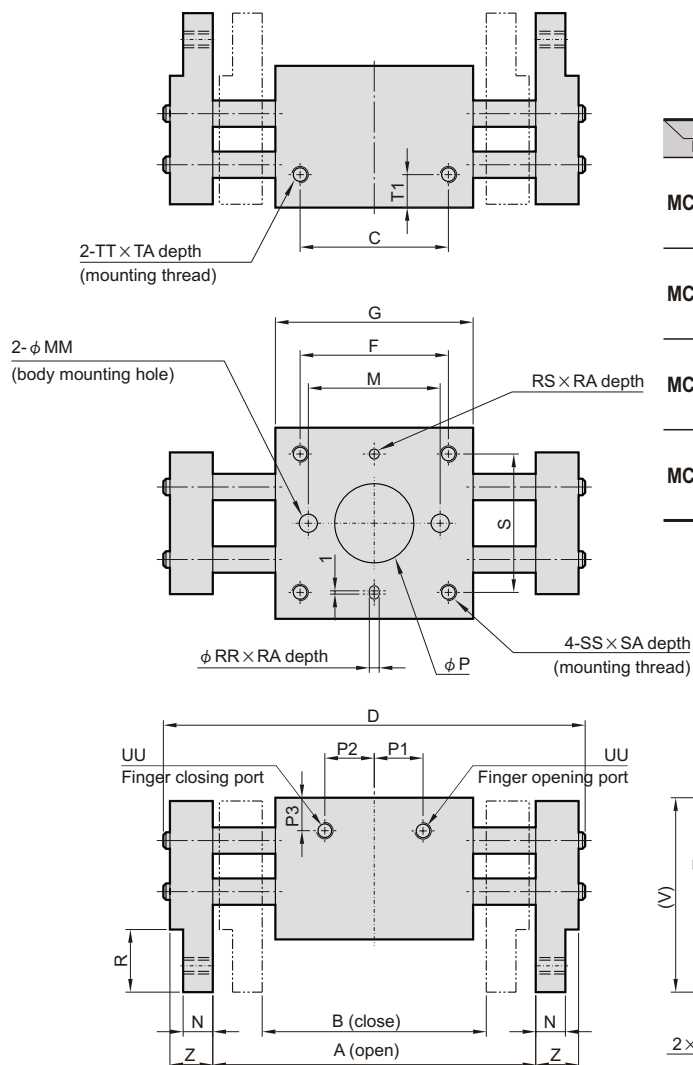
1N $\approx$ 0.102kgf 1MPa $\approx$ 10.2kgf/cm<sup>2</sup>



- With reference to the holding force, under the condition must be considered.
- Condition: friction coefficient, great acceleration impact is expected during work piece rotate.
- It recommend: select a type of arithmetic holding force that can produce 10 to 20 times for work piece weight.

# MCHX Dimensions $\phi 16 \sim \phi 32$

## WIDE TYPE PARALLEL GRIPPERS



Code Model	Stroke	A	B	C	D	F	G	M	P1	P2
MCHX-16	30	98	68	28	128	45	60	40	14.8	15
	60	170	110	58	200	75	90	70	17.6	30
	80	210	130	78	240	95	110	90	17.6	40
MCHX-20	40	122	82	38	160	58	71	54	20.5	20.5
	80	222	142	80	260	100	113	96	25	34.5
	100	262	162	100	300	120	133	116	18.5	44.5
MCHX-25	50	150	100	48	296	70	88	66	24	24
	100	282	182	102	328	124	142	120	23.3	49.85
	120	320	200	120	366	142	160	138	23.2	58.85
MCHX-32	70	220	150	60	272	86	110	-	25	23.5
	120	318	198	108	370	134	158	-	26.5	47.5
	160	402	242	152	454	178	202	-	25.5	69.5

Code Model	H	K	L	N	MM	P	P3	QQ	R	RA	RR	RS	S	SA	SS	T	T1	TA	TT	UU	V	W	Z
MCHX-16	55	25	43	9	5.5	24	10	M5×0.8	19	3	3	3	42	10	M5×0.8	40	10	7	M5×0.8	M5×0.8	59	8	13
MCHX-20	65	30	54	12.5	6	24	7.7	M6×1.0	24	4	4	4	52	12	M6×1.0	46	11	10	M6×1.0	M5×0.8	71	9.5	17
MCHX-25	76	40	64	14	9	30	16	M8×1.25	29	4	4	4	62	16	M8×1.25	53	12.5	7	M8×1.25	M5×0.8	82	11	21
MCHX-32	82	50	70	15	-	34	18	M10×1.5	32	8	6	6	64	16	M8×1.25	71	22	11	M8×1.25	RC(PT)1/8"	101	16	24