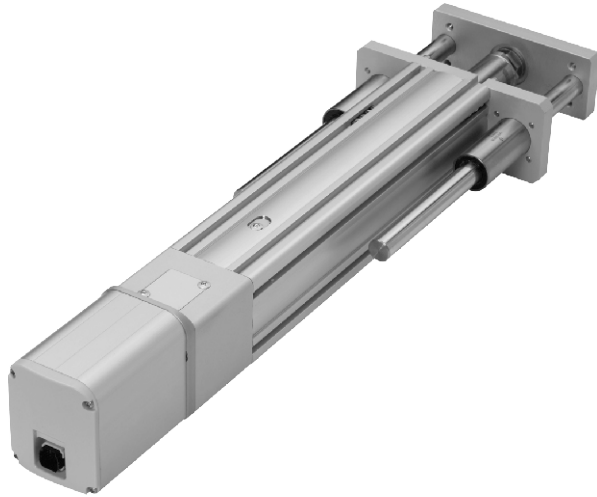


# MEQYC-65D series

## ROD ELECTRIC CYLINDER - BALL SCREW DRIVE (WITH MOTOR)



Mindman



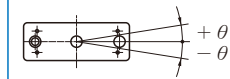
### Specification

Model	MEQYC-65D			
Repeatability (mm)	±0.01			
Ball screw lead (mm)	5	10	20	
Maximum speed (mm/s) <sup>※1</sup>	250	500	1000	
Maximum payload	Horizontal(kg)	110	88	40
	Vertical (kg)	30	20	10
Rated thrust (N)	791	395	197	
Stroke / pitch (mm) <sup>※2</sup>	50~500 / 50 Pitch			
Motor dimension (mm)	□ 56			
Ball screw spec (mm)	C7 φ 16			
Anti-rotating accuracy (θ) <sup>※3</sup>	±0.05°			

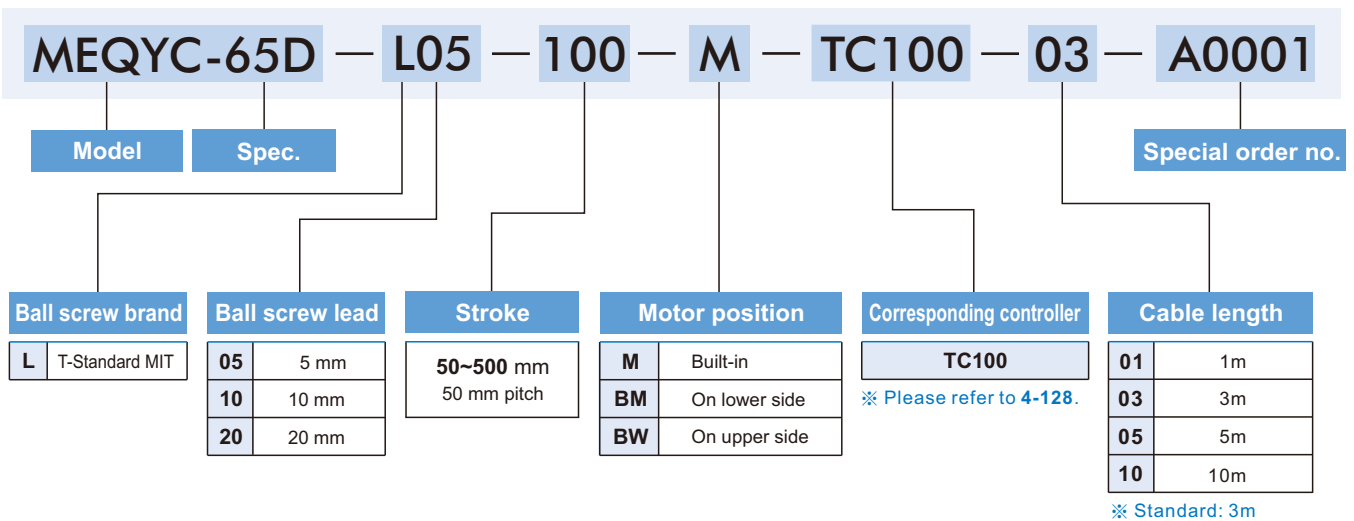
※1.The maximum speed shown here is when software speed setting is 100%.

※2.When the stroke is over 300mm, the run-out of the ball screw will occur. We recommend to low down the working speed under this circumstances.

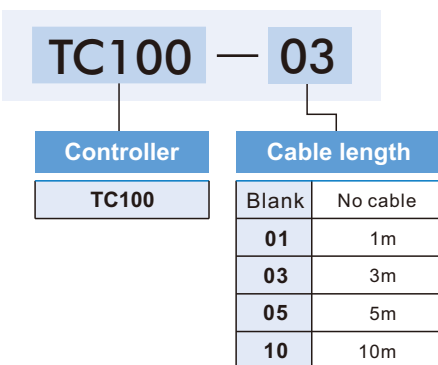
※3. Anti-rotating accuracy of plate



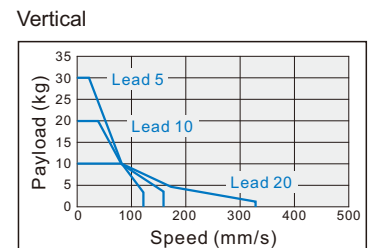
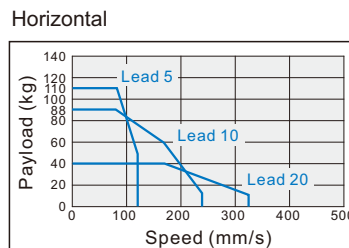
### Order example of cylinder



### Order example of controller



### Speed-payload curve diagram



# MEQYC-65D Dimensions

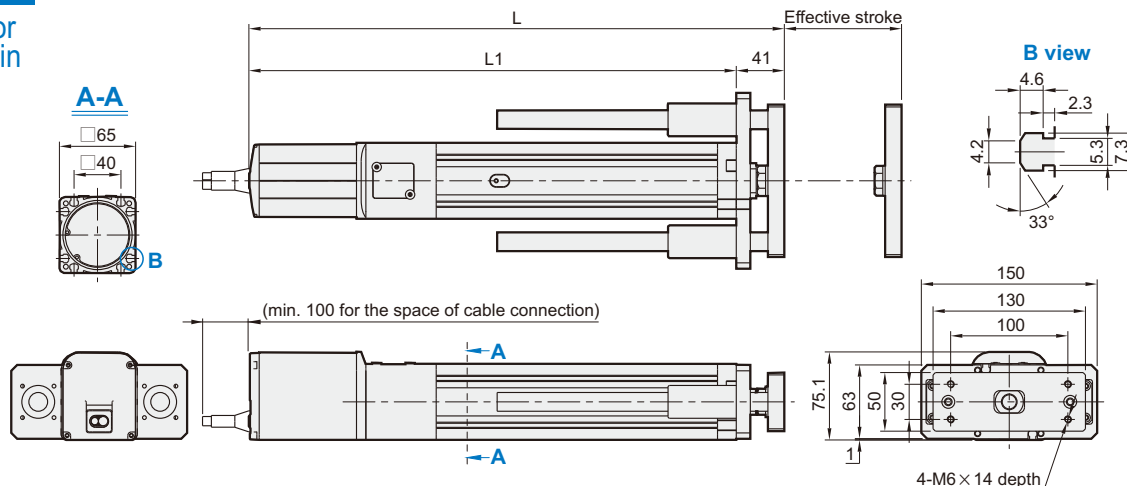
## ROD ELECTRIC CYLINDER - BALL SCREW DRIVE (WITH MOTOR)



Mindman

**M**

Motor built-in

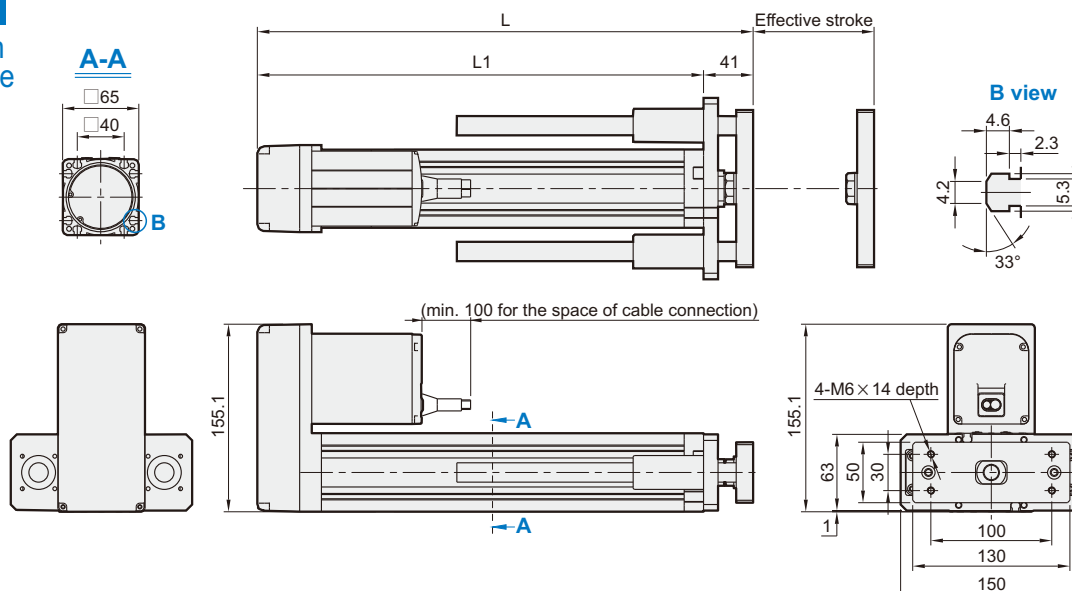


Unit: mm

Stroke	50	100	150	200	250	300	350	400	450	500
<b>L</b>	407	457	507	557	607	657	707	757	807	857
<b>L1</b>	366	416	466	516	566	616	666	716	766	815
<b>KG</b>	6	6.26	6.52	6.78	7.03	7.29	7.55	7.81	8.07	8.32

**BW**

Motor on upper side



Unit: mm

Stroke	50	100	150	200	250	300	350	400	450	500
<b>L</b>	298	348	398	448	498	548	598	648	698	748
<b>L1</b>	257	307	357	407	457	507	557	607	657	707
<b>KG</b>	6.5	6.76	7.02	7.28	7.53	7.79	8.05	8.31	8.57	8.82

# MEQYC-65D Dimensions

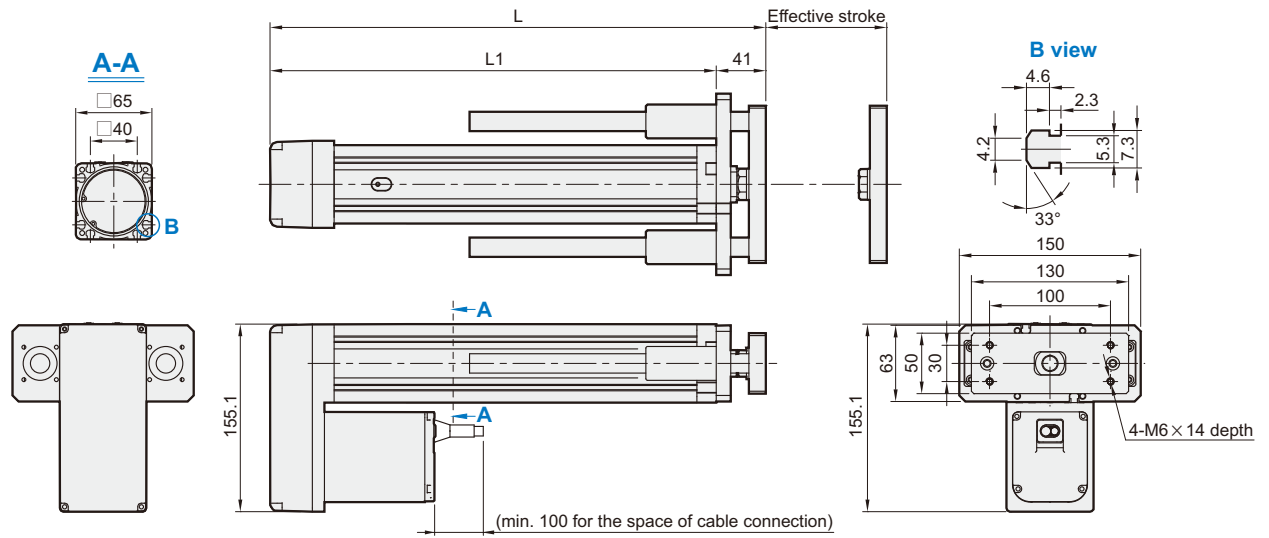
## ROD ELECTRIC CYLINDER - BALL SCREW DRIVE (WITH MOTOR)



Mindman

### BM

Motor on lower side



Unit: mm

Stroke	50	100	150	200	250	300	350	400	450	500
<b>L</b>	298	348	398	448	498	548	598	648	698	748
<b>L1</b>	257	307	357	407	457	507	557	607	657	707
<b>KG</b>	6.5	6.76	7.02	7.28	7.53	7.79	8.05	8.31	8.57	8.82