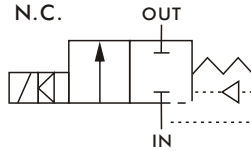
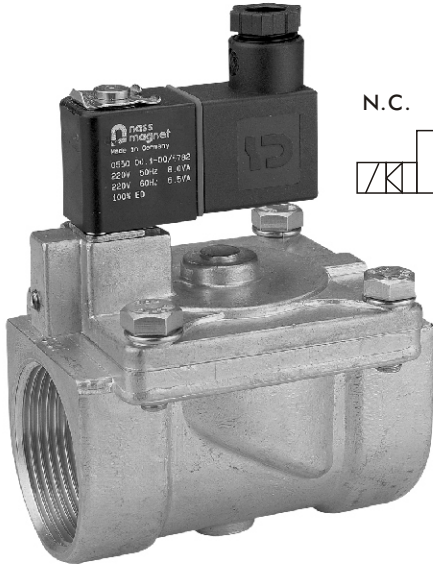


MGD series

2/2 WAY DIAPHRAGM SERIES N. C. SOLENOID VALVE



Specification :

- IP65 100% ED coil
- EExmIIT4 PTB approval coil

Power consumption:

Coil power	3L*	3H*	2E
AC(VA)	4.9	8.5	4.8
DC(W)	4.5	6.8	5.2

Dimensions:

Model	MGD				
Code	10/15	20	25	32/40	45/50
Dimension (mm)					
A	62	76	81	82	95
B	77	93	100	110	130
C	64	81	91	97	118
D	41.5	51.5	61.5	76	96
E	21	31	37	--	--
N.W.(Kg)	0.5	0.7	1.0	1.65	3.35

Order example:

MGD - 25 - N - 3 - D - F - □ - AC

MODEL

CODE
10, 15, 20,
25, 32, 40,
45, 50

PLUG

□: DIN
D: LED
G: 1/2"NPTF

CONN.

□: Screwed
F: Flanged

SEAL MAT'L

N: NBR
J: EPDM
V: Viton

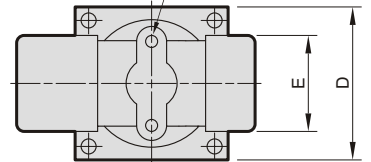
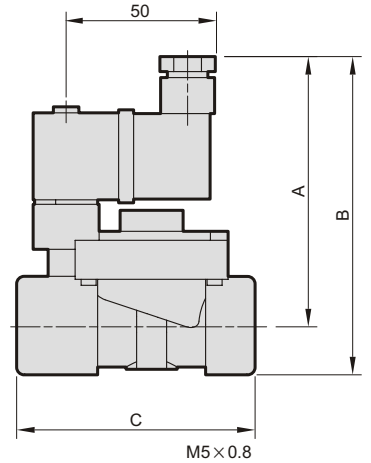
COIL

3L, 3H, 2E

MANUAL

□: Without
M: With

VOLTAGE



Specification:

Model MGD: Forged brass body, N.C., for water, air, gas etc.																		
PIPE G	Code no.	Seal Mat'l	Coil	Orifice (mm)	Temp. °C		Working press. (0.3~ bar)											
					Coil 3/2E		Coil 3L*			Coil 3H*			Coil 2E			CV		
					N	J	N	J	V	N	J	V	N	J	V			
3/8	10	N J V	3 2E	15	-5 80	-10 120	10			16			7			2.0		
1/2	15						7			10			5			2.5		
3/4	20			10			16			7			5.2					
1	25			7			10			5			8.5					
1-1/4	32			7			10			5			16					
1-1/2	40			7			10			5			21					
1-1/2	45			7			10			5			26					
2	50	7			10			5			31							

* #Coil 3L means #Coil 3 with lower power consumption, #Coil 3H means #Coil 3 with higher power consumption.