

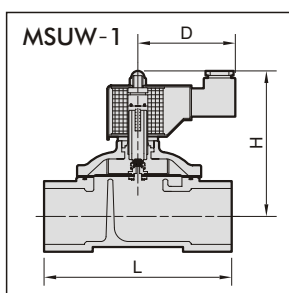
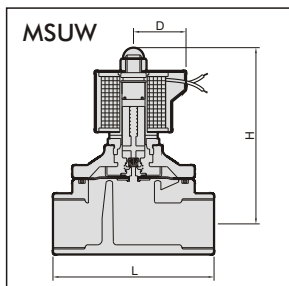
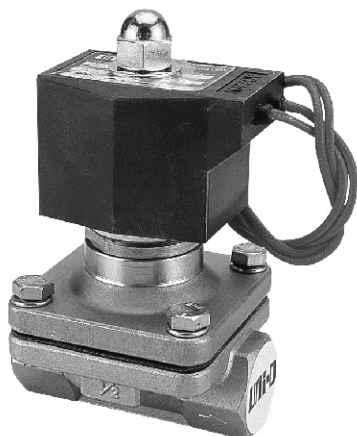
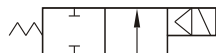
# MSUW / MSUW-NO series Normally closed / open



## SOLENOID VALVE

2-WAY normally closed / normally open solenoid valve.

Available fluid: Water, air & light oil.



### Specification :

- MSUW / MUSW-NO series is pilot diaphragm drive, normal close / normal open.
- Valve body made of investment casting S/S 316.
- Can be operated directly without pressure.
- Other voltage of AC/DC available when required.
- Viton(130°C), Silicon(130°C), NBR(80°C.).
- AC Voltage tolerance: ±10%  
DC Voltage tolerance: ±1%.

### Material:

Parts name	Material
Body	CF8M
Coil	Special copper wire (H)
Tube	Stainless steel
Spring	Stainless steel
Core	Stainless steel
Plug	NBR, Viton, Silicon
Diaphragm	NBR, Viton, Silicon

### Order example:

**MSUW - 20 - NO - □ - □ - □ - AC110 - BSP**

MODEL

PIPE SIZE

- 15 : 1/2"
- 20 : 3/4"
- 25 : 1"
- 35-1 : 1 1/4"
- 40-1 : 1 1/2"
- 50-1 : 2"

□ : Normally closed  
NO: Normally open

SEAL MAT'L

- : NBR
- V : Viton
- S : Silicon

FLUID

- : Water, Air
- LO : Light oil (Note, if diesel fuel or gasoline.)
- G : Gas
- VA : Vacuum

VOLTAGE

- AC220V(50/60)Hz
- AC110V(50/60)Hz
- DC24V

COIL

- : Special copper wire
- D : DIN

PORT THREAD

- Blank: PT thread
- BSP: BSP thread
- NPT: NPT thread

### Caution:

- Pipes must be washed neat and clean before fitted.
- A Y-STRAINER has to be installed in the front of solenoid valve, that is best for long life.

### Not for fluid of:

- Liquid when heat, solid when cool.
- Corrosive fluid.
- Viscosity over 20 cst.

	Model	DIN	Pipe size	Cv	Orifice (mm)	Fluid temp	Max. operating pressure diff. kgf/cm <sup>2</sup>					Dimensions(mm)			Weight (kg)
							Water	Air	Light oil	Gas	Vacuum	L	H	D	
NC	MSUW-15	●	PT 1/2"	4.5	15	-5~+80°C	0~5	0~7	0~5	—	—	70	100	50	0.9
	MSUW-20	●	PT 3/4"	8.6	20	-5~+80°C	0~5	0~7	0~5	—	—	73	102	50	1.0
	MSUW-25	●	PT 1"	12	25	-5~+80°C	0~5	0~7	0~5	—	—	93	106	50	1.6
	MSUW-35-1	●	PT 1 1/4"	24	35	-5~+80°C	0~5	0~7	0~5	—	—	125	140	58	3.2
	MSUW-40-1	●	PT 1 1/2"	28	40	-5~+80°C	0~5	0~7	0~5	—	—	125	140	58	3.4
	MSUW-50-1	●	PT 2"	48	50	-5~+80°C	0~5	0~7	0~5	—	—	167	170	58	5.8
NO	MSUW-15-NO	●	PT 1/2"	4.5	15	-5~+80°C	0~5	0~7	—	0~7	0~10 <sup>-3</sup> Torr	70	126	50	1.0
	MSUW-20-NO	●	PT 3/4"	8.6	20	-5~+80°C	0~5	0~7	—	0~7	0~10 <sup>-3</sup> Torr	73	132	50	1.1
	MSUW-25-NO	●	PT 1"	12	25	-5~+80°C	0~5	0~7	—	0~7	0~10 <sup>-3</sup> Torr	93	139	50	1.7
	MSUW-35-1-NO	●	PT 1 1/4"	24	35	-5~+80°C	0~5	0~7	—	0~7	0~10 <sup>-3</sup> Torr	125	154	58	3.5
	MSUW-40-1-NO	●	PT 1 1/2"	28	40	-5~+80°C	0~5	0~7	—	0~7	0~10 <sup>-3</sup> Torr	125	156	58	3.7
	MSUW-50-1-NO	●	PT 2"	48	50	-5~+80°C	0~5	0~7	—	0~7	0~10 <sup>-3</sup> Torr	167	175	58	6.1

※The pressure ratings indicated above are based on AC110V/220V. The maximum pressure may vary in case on DC/AC24V.