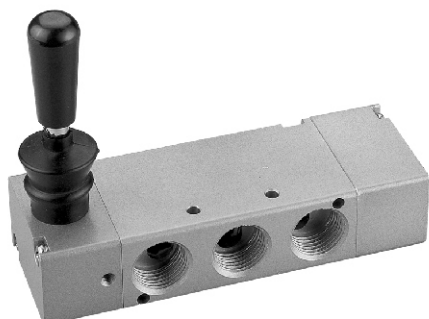


# MVHB-500 series

HAND VALVE



## Specification:

Model	MVHB-500(V)-4TV	MVHB-500(V)-4TV*
	MVHB-500(V)-4TV-SP	MVHB-500(V)-4TV*-SP
Bore No.	15A	
Port size	PT 1/2	
No. of port	5	
No. of position	2	3
Medium	Air	
Operating pressure range	0~12 kgf/cm <sup>2</sup>	
Effective orifice	41 mm <sup>2</sup>	
Ambient temperature	-5~+60°C (No freezing)	
Weight	519 g	560 g

## Order example:

**MVHB - 500V - 4TVC - SP - BSP**

MODEL

BODY WIDTH

4way

VALVE TYPE

SPRING RETURN

PORT THREAD

Blank: Standard type  
V: Vertical type

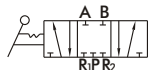
Blank: 5/2  
C: Close center (5/3)  
P: Pressure center (5/3)  
R: Exhaust center (5/3)

Blank: PT thread  
BSP: BSP thread  
NPT: NPT thread

**MVHB-500-4TV**



**MVHB-500-4TVC**



**MVHB-500-4TVP**



**MVHB-500-4TVR**



**MVHB-500-4TV-SP**



**MVHB-500-4TVC-SP**



**MVHB-500-4TVP-SP**



**MVHB-500-4TVR-SP**

