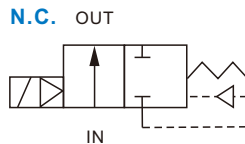
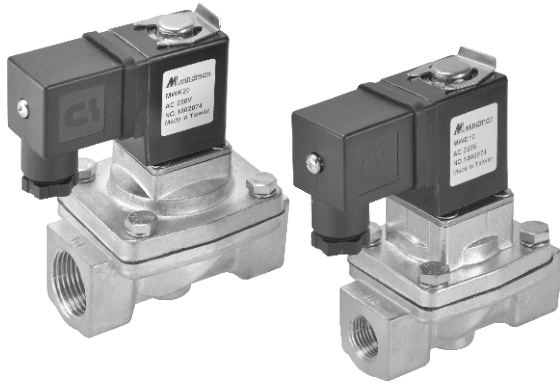


MWD / MWK series

2/2 WAY N.C. DIAPHRAGM TYPE SOLENOID VALVE



mindman



Specification

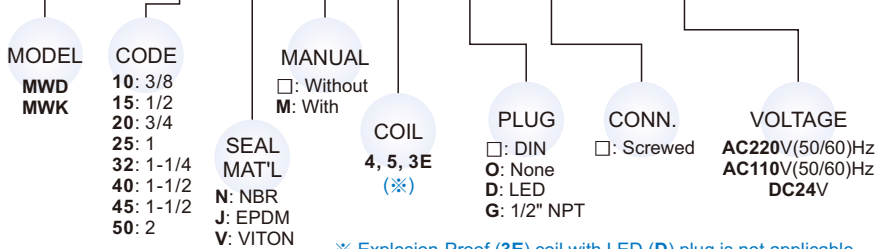
- IP65 waterproof coil.
- Continuous cycle, 100% ED.
- Ex coil is EExm II T4 PTB approval.

Dimensions

Model	MWD / MWK						
Code Dimension (mm)	10/15	20	25	32	40	45	50
L	77	82	93	101	101	123	123
H	107	111	119	135	135	150	150
W	51	61	72	76	76	95	95
N.W.(Kg)	Coil 4	0.83	1.0	1.4	2.0	1.9	3.7
	Coil 5	0.9	1.1	1.5	2.1	2.0	3.8
	Coil 3E	1.2	1.4	1.8	2.4	2.3	4.1

Order example

MWD-15-J-M-5-G-□-AC110



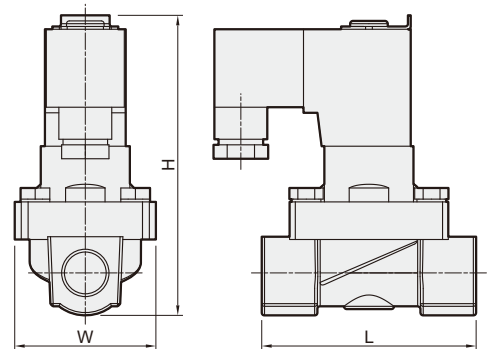
※ Explosion-Proof (3E) coil with LED (D) plug is not applicable.

Power consumption

Coil power	4	5	3E
AC 50/60Hz(VA)	19.5	23.0	9.2
DC(W)	15.0	18.5	10.0

Specification

Model MWD : Forged brass body, N.C., O.P.D. 0.2 bar, for water. air. gas.															
Code (PIPE) G	Seal mat'l	Coil	Orifice mm	Temp. °C			Working press. (0.2~ bar)						Cv		
				N	J	V	Coil 4 · 5 · 3E		Coil 4		Coil 5			Coil 3E	
							AC	DC	AC	DC	AC	DC		AC	DC
10 (3/8)	N, J, V	4, 5, 3E	18	-10	-10	10	1.5	16	4.0	2.5	1.5	1.5	3.0		
15 (1/2)			23										4.0		
20 (3/4)			28										6.8		
25 (1)			33										11.0		
32 (1-1/4)			33										16.0		
40 (1-1/2)			44										21.0		
45 (1-1/2)			44										26.0		
50 (2)	44	31.0													



Model MWK : Forged brass body, N.C., O.P.D. 0 bar, for water. air. gas. light oil. vacuum.															
Code (PIPE) G	Seal mat'l	Coil	Orifice mm	Temp. °C			Working press. (0~ bar)						Cv		
				N	J	V	Coil 4 · 5 · 3E		Coil 4		Coil 5			Coil 3E	
							AC	DC	AC	DC	AC	DC		AC	DC
10 (3/8)	N, J, V	4, 5, 3E	18	-10	-10	10	1.5	16	4.0	2.5	1.5	1.5	3.0		
15 (1/2)			23										4.0		
20 (3/4)			28										6.8		
25 (1)			33										11.0		
32 (1-1/4)			33										16.0		
40 (1-1/2)			44										21.0		
45 (1-1/2)			44										26.0		
50 (2)	44	31.0													